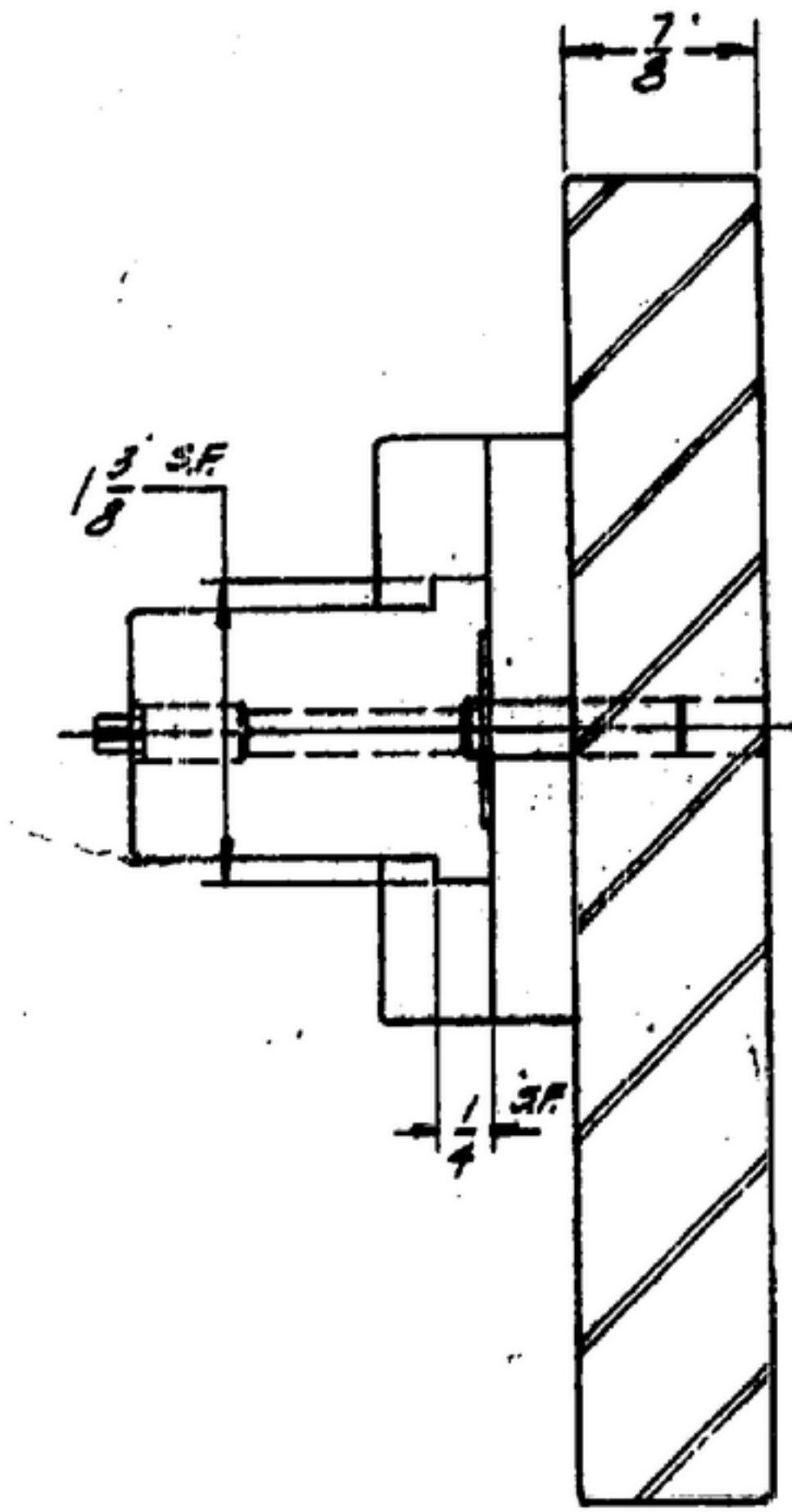
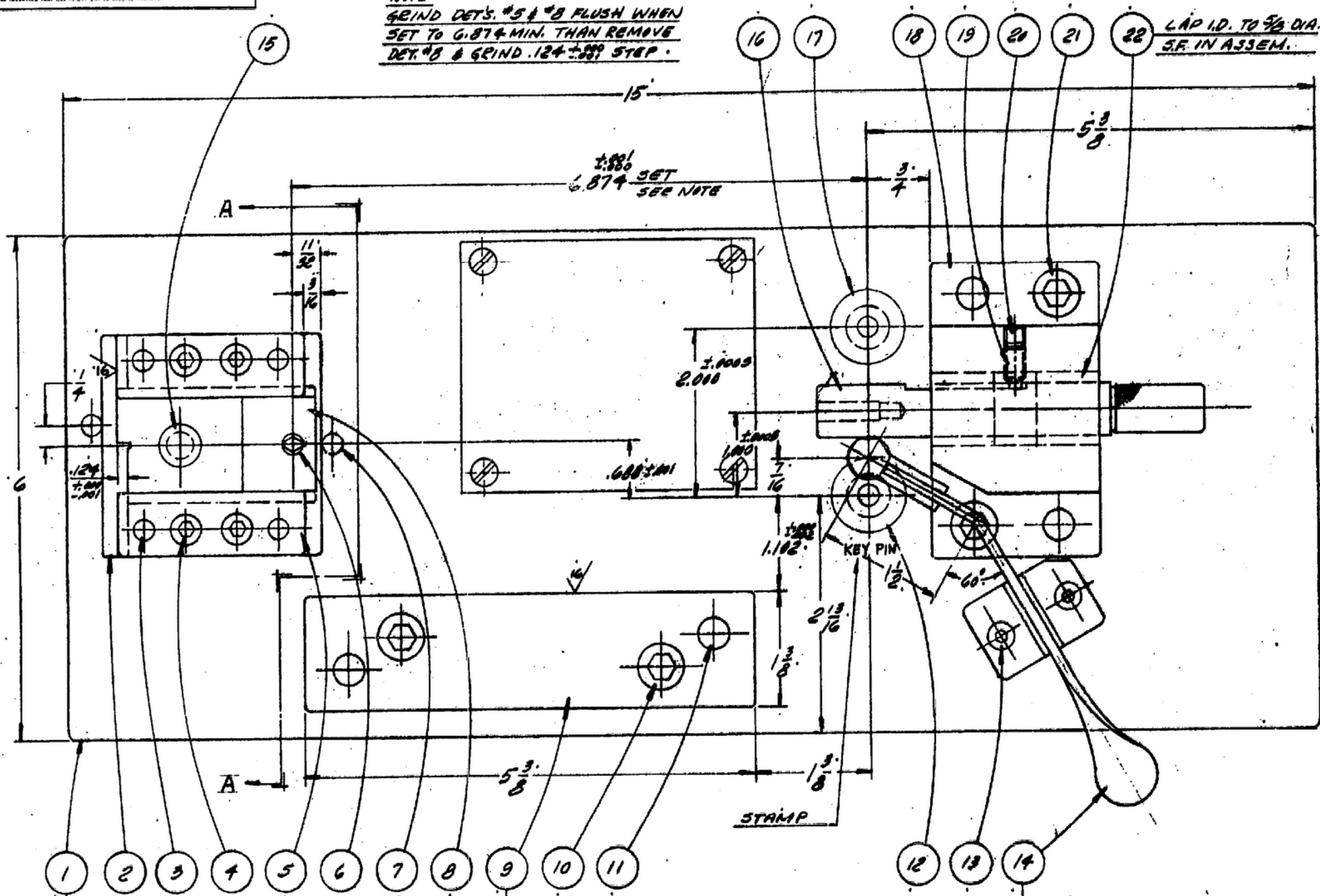


NOTE: *FOR INFORMATION ONLY. CONTRACTOR MAY AT HIS OPTION DEVIATE FROM THESE PROCESS DETAILS

NOTE
GRIND DETS. #5 & #8 FLUSH WHEN SET TO 0.874 MIN. THEN REMOVE DET. #8 & GRIND .124 ±.001 STEP.

LAP I.D. TO 3/8 DIA. S.F. IN ASSEM.



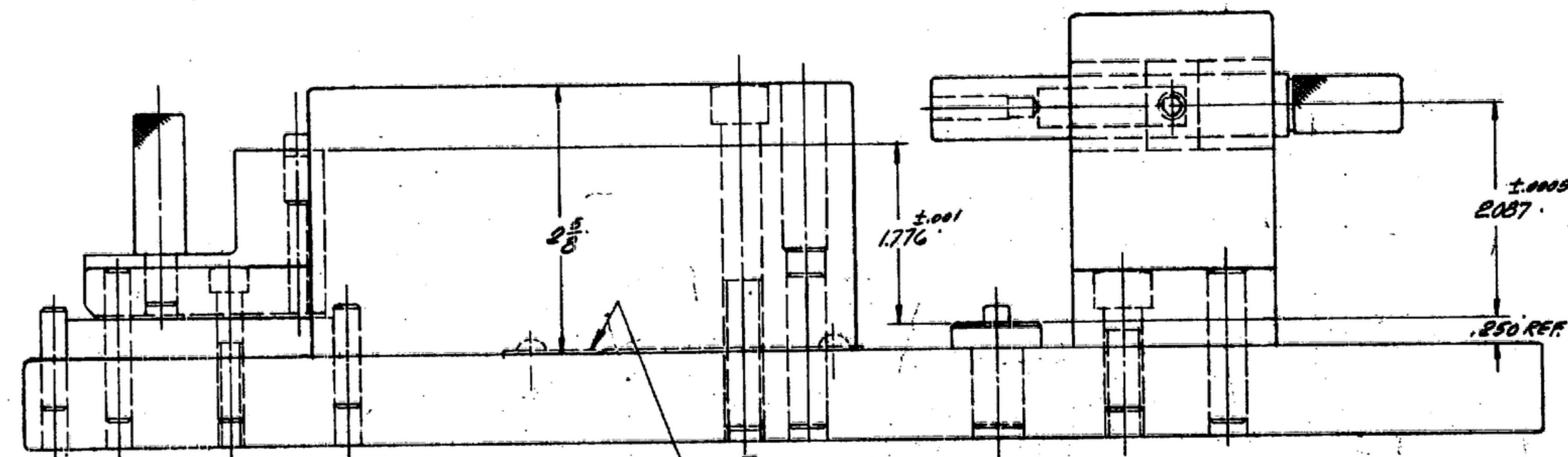
SECTION A-A

NOTES:
1. SUPPLIED BY DETROIT STAMPING CO. 340 HIGHLAND AVE. DETROIT 3, MICH. OR EQUAL
2. SUPPLIED BY ACME INDUSTRIAL CO. 200-214 N. LAFLIN ST. CHICAGO 7, ILL. OR EQUAL
3. THIS GAGE WILL CHECK SM-D-57322
4. A PROTECTIVE FINISH PER SPEC. MIL-C-10844 (OR E) SHALL BE APPLIED TO NON-FUNCTIONING, NON-MOUNTING & NON-LOCATING SURFACES TO PREVENT CORROSION. BLACK OR GRAY COLORS ARE PREFERRED.

STEEL-NORMALIZED PER SPEC. QQ-S-633

STEEL-NORMALIZED & TEMPERED PER SPEC. QQ-S-633 ROCK 'C' 62-68

ALTER AS SHOWN



ENGRAVE:
R-390A/URR
RECEIVER
OSCILLATOR
CHECK LOC. OF 3 MOUNTING HOLES & LOC. OF CONTROL SHAFT.
SIG. C. INSP.
57322
(MFR'S NAME OR SYMBOL)

PART NO.	DESCRIPTION	QTY.	MATERIAL	REMARKS
22	2			
21	2			
20	1			
19	1			
18	1			
17	1			
16	1			
15	1			
14	1			
13	2			
12	1		STEEL	
11	4			
10	2			
9	1			
8	1			
7	2			
6	1			
5	2			
4	4			
3	4			
2	7			
1	1			

UNLESS OTHERWISE SPECIFIED DIMENSIONS ARE IN INCHES TOLERANCES ON FRACTIONS - DECIMALS - ANGLES		PIN GAGE TO CHECK LOCATION OF 3 MOUNTING HOLES & LOCATION OF CONTROL SHAFT.		DEPARTMENT OF THE ARMY SIGNAL CORPS ENGINEERING LABORATORIES FORT MONMOUTH NEW JERSEY SM-D-57322 SHEET 1 OF 2	
REVIEWED	PME	DATE	14-10-55	SCALE	FULL
APPROVED	ALL H. PME	APPLICATION	30-GL-57322	USED ON	

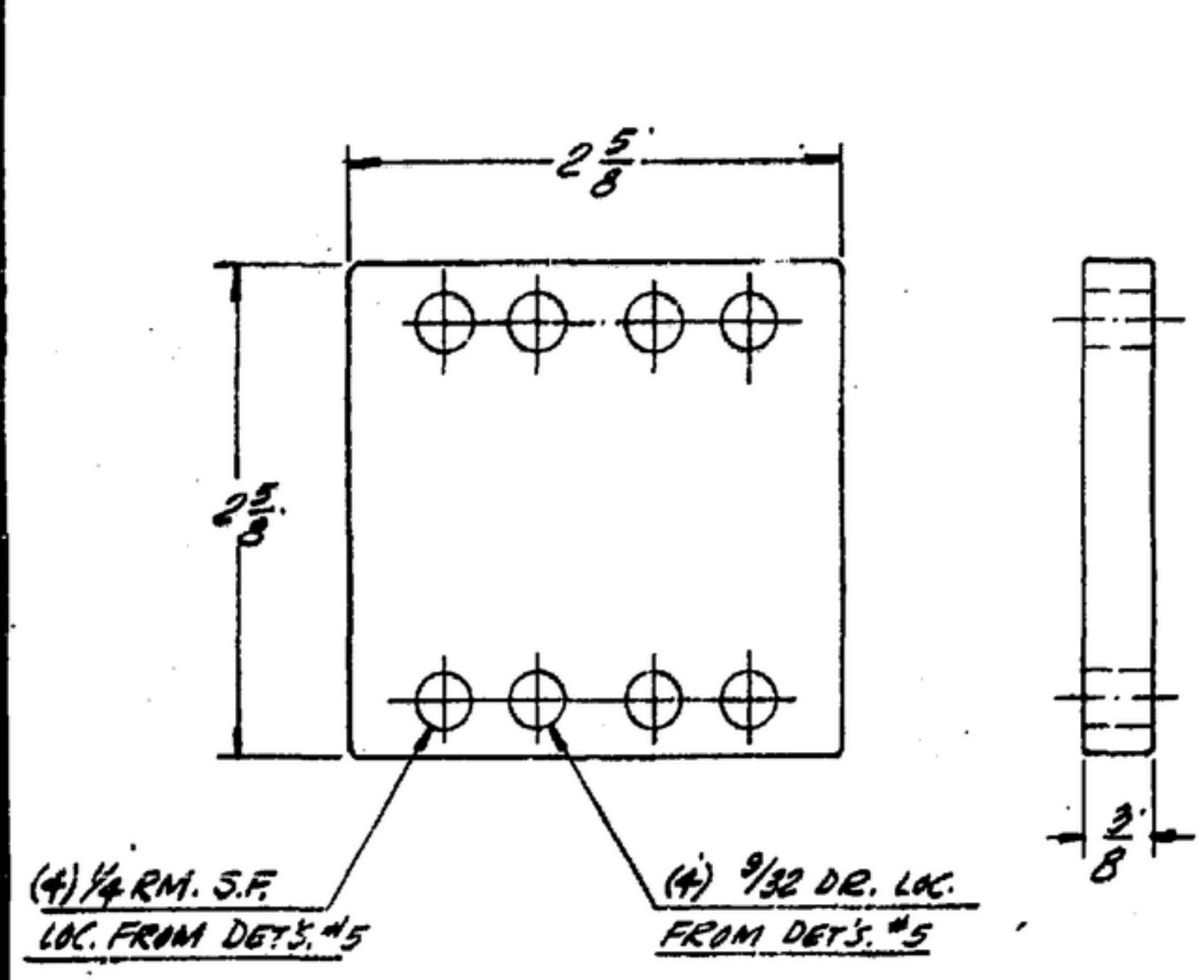
WHEN REFERRING TO THIS DRAWING STATE DRAWING NO., APPLICABLE ISSUE SYMBOL, AND DATE.

SYM	DESCRIPTION	DATE	APPROVAL
-----	-------------	------	----------

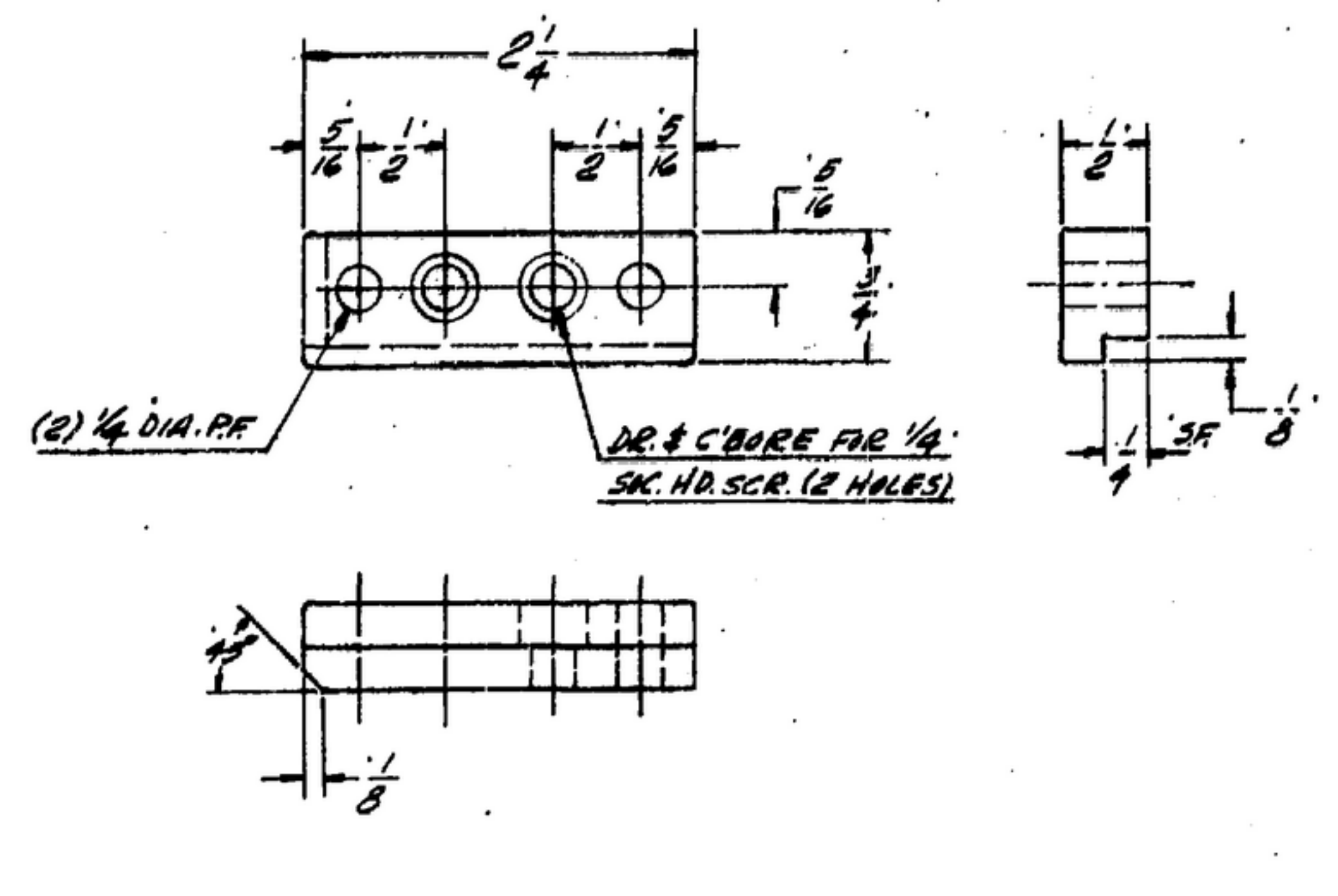
NOTE: *FOR INFORMATION ONLY, CONTRACTOR MAY AT HIS OPTION DEVIATE FROM THESE PROCESS DETAILS

UNLESS OTHERWISE SPECIFIED DIMENSIONS ARE IN INCHES. DIMENSIONS ON FRACTIONS ON DECIMALS ANGLES

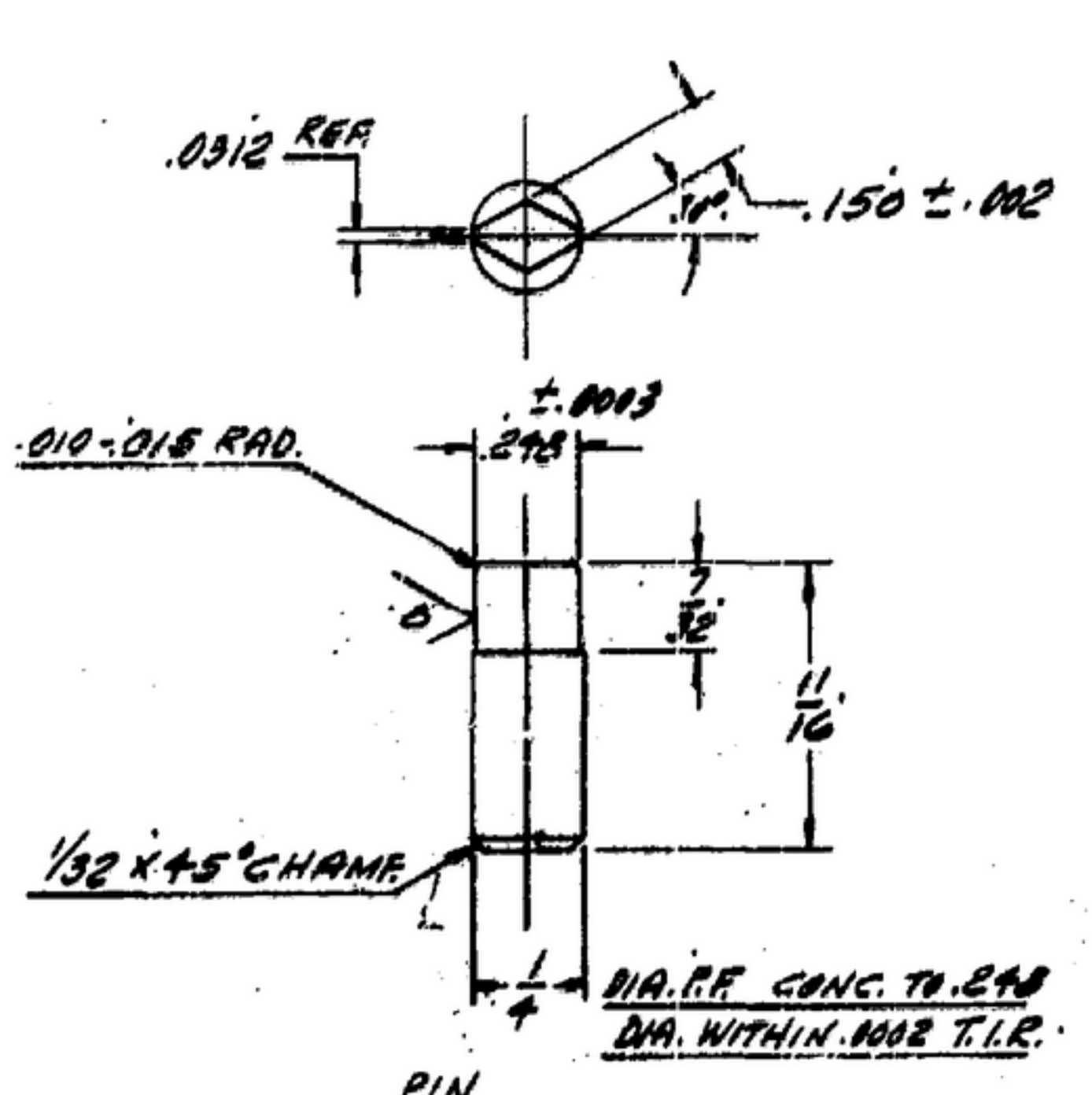
THIS DRAWING AND ANY MODIFICATION BY THE CONTRACTOR ARE THE PROPERTY OF THE SIGNAL CORPS ENGINEERING LABORATORIES. IT IS TO BE KEPT IN THE CONTRACTOR'S OFFICE AND NOT REPRODUCED OR COPIED IN ANY MANNER WITHOUT THE WRITTEN PERMISSION OF THE SIGNAL CORPS ENGINEERING LABORATORIES.



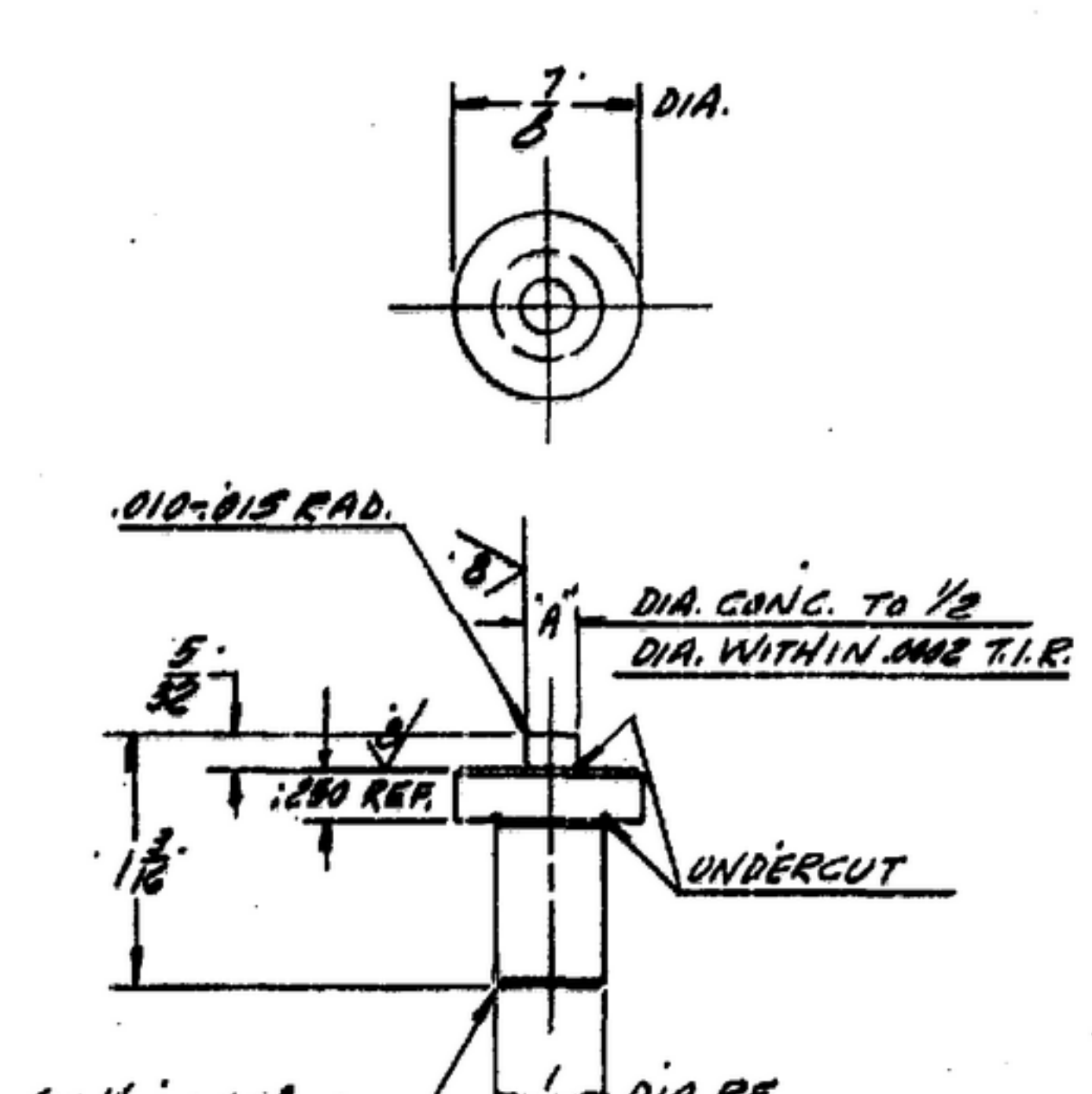
2 1 REQ. STEEL - FS-A2 PER SPEC. QQ-S-00778 ROCK 'C' 62 MIN.



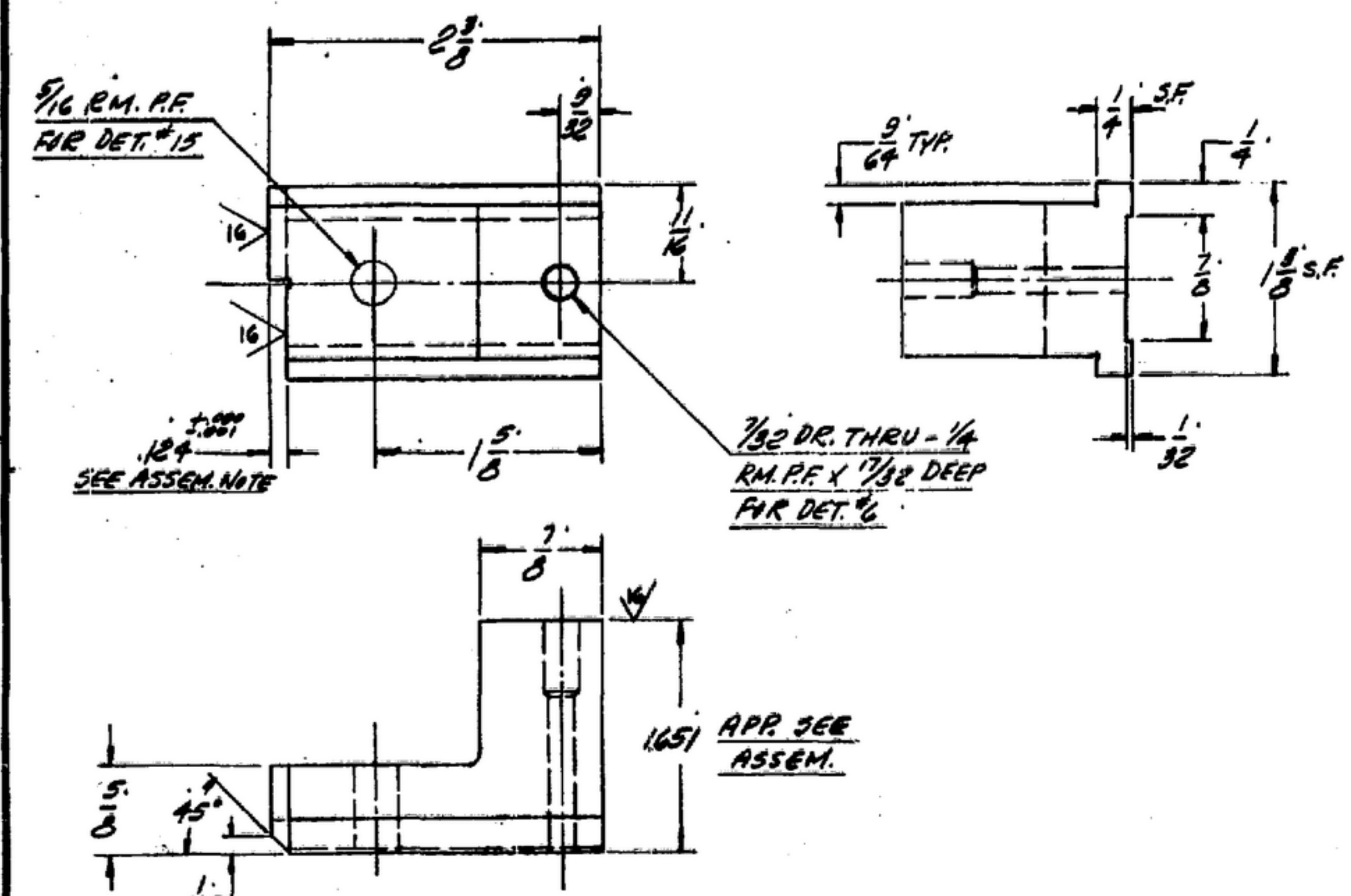
5 2 REQ. RIGHT & LEFT STEEL - FS-A2 PER SPEC. QQ-S-00778 ROCK 'C' 62 MIN.



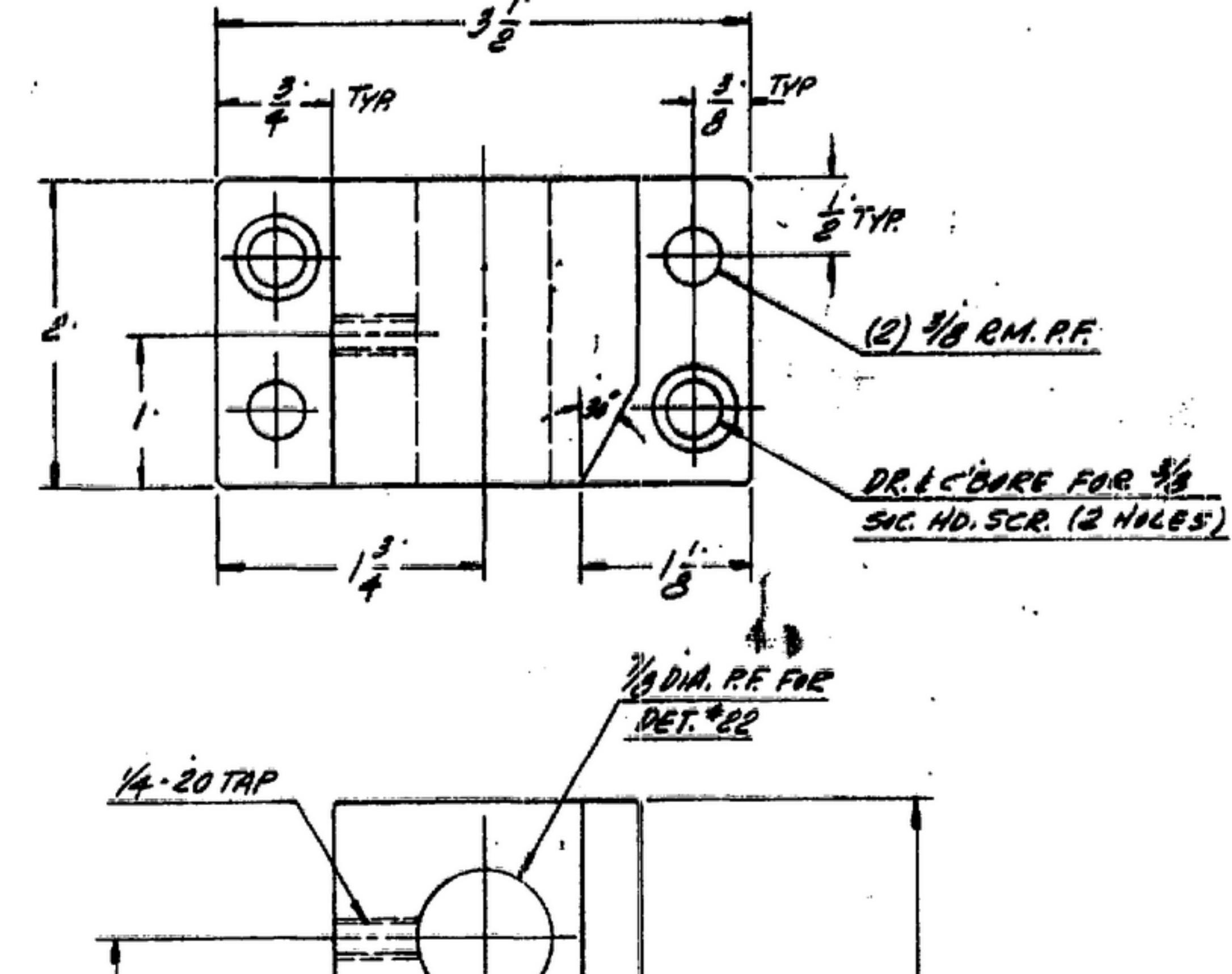
6 1 REQ. STEEL - FS-A2 PER SPEC. QQ-S-00778 ROCK 'C' 62 MIN.



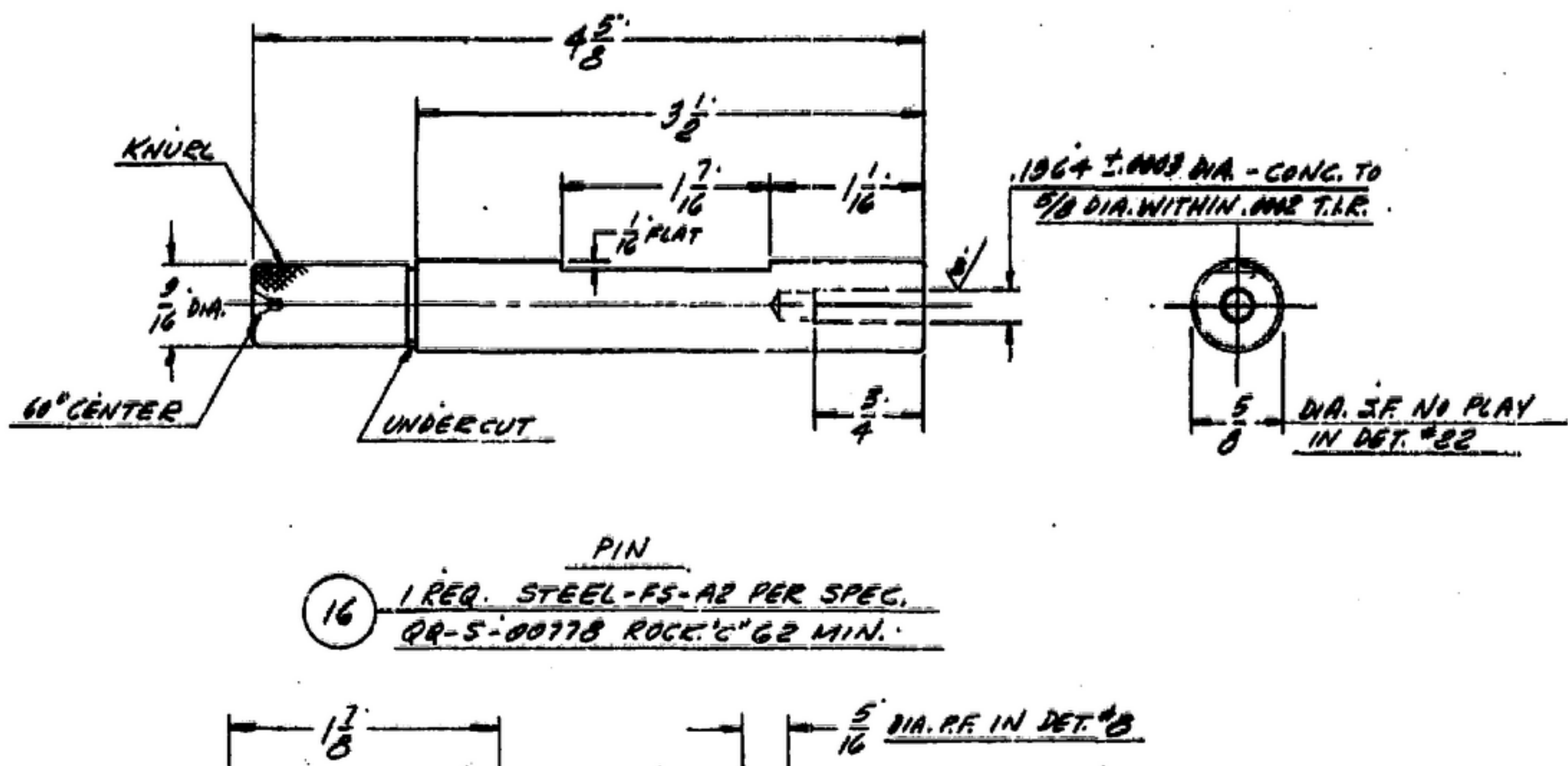
12 1 REQ. STEEL - FS-A2 PER SPEC. QQ-S-00778 ROCK 'C' 62 MIN. 'A' = .278 ± .003 DIA.
17 1 REQ. STEEL - FS-A2 PER SPEC. QQ-S-00778 ROCK 'C' 62 MIN. 'A' = .2187 ± .003 DIA.



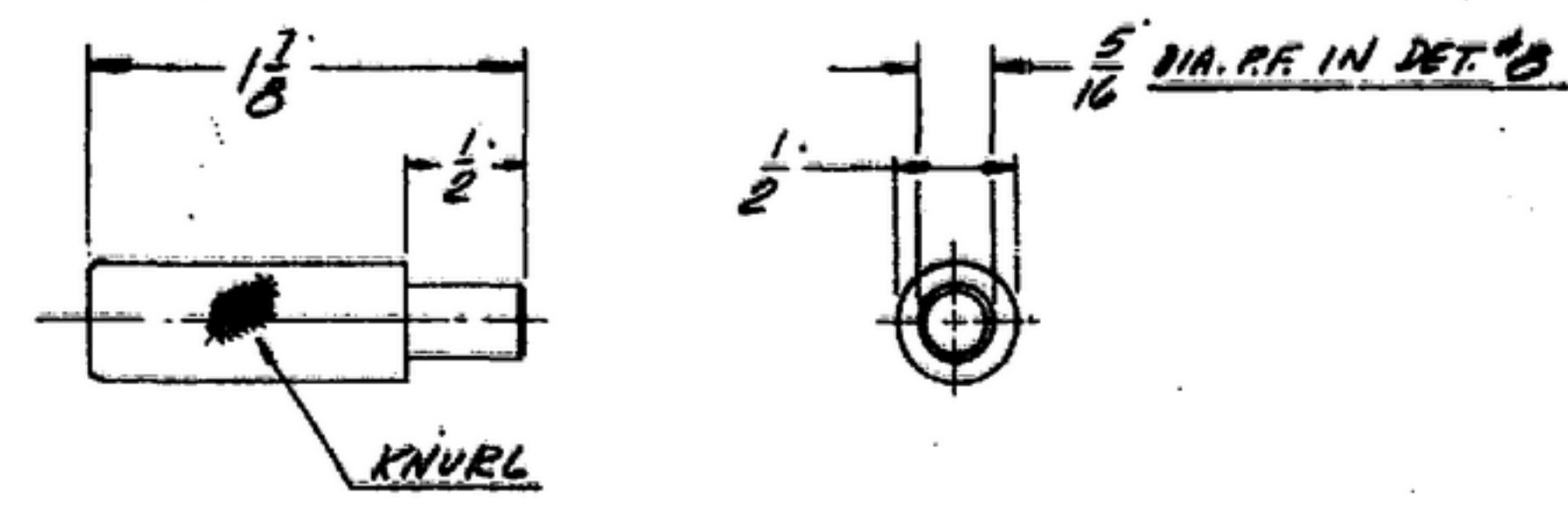
8 1 REQ. STEEL - FS-A2 PER SPEC. QQ-S-00778 ROCK 'C' 62 MIN.



18 1 REQ. STEEL - NORMALIZED PER SPEC. QQ-S-638



16 1 REQ. STEEL - FS-A2 PER SPEC. QQ-S-00778 ROCK 'C' 62 MIN.



15 1 REQ. STEEL - AS COLD FINISHED PER SPEC. QQ-S-639

PART NO.	DESCRIPTION	MATL.	MATL. SPEC.
----------	-------------	-------	-------------

UNLESS OTHERWISE SPECIFIED DIMENSIONS ARE IN INCHES. DIMENSIONS ON FRACTIONS ON DECIMALS ANGLES		SIGNAL CORPS		PIN GAGE		DEPARTMENT OF THE ARMY SIGNAL CORPS ENGINEERING LABORATORIES	
± .002	± .003	REVIEWED	PINE	TO CHECK LOCATION OF 3 MOUNTING HOLES, & LOCATION OF CONTROL SHAFT.		FOOTBONMOUTH NEW JERSEY	
± .001	± .002	APPROVED	MA H. P.M.B.	SCALE FULL		SM-D-57322 SHEET 2 OF 2	
APPLICATION		DATE 14-10-55		WHEN REFERRING TO THIS DRAWING STATE DRAWING NO., APPLICABLE ISSUE			